

Other Controls

Noise

Zone	Maximum equipment noise level Criteria 1 ¹	Maximum equipment noise level Criteria 2 ²
1	115	105
2	117	107
3	118	108

¹ Background + 20 db(A) - Construction work less than 4 weeks

² Background + 10 db(A) - Construction work greater than 4 weeks

Vegetation Clearing

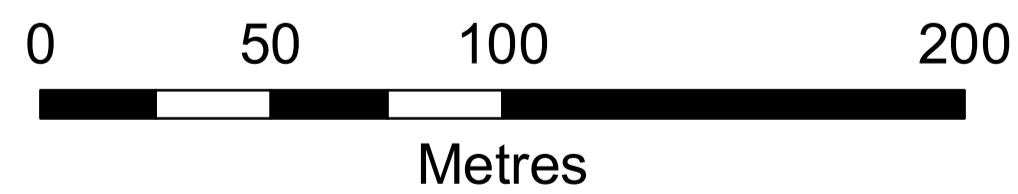
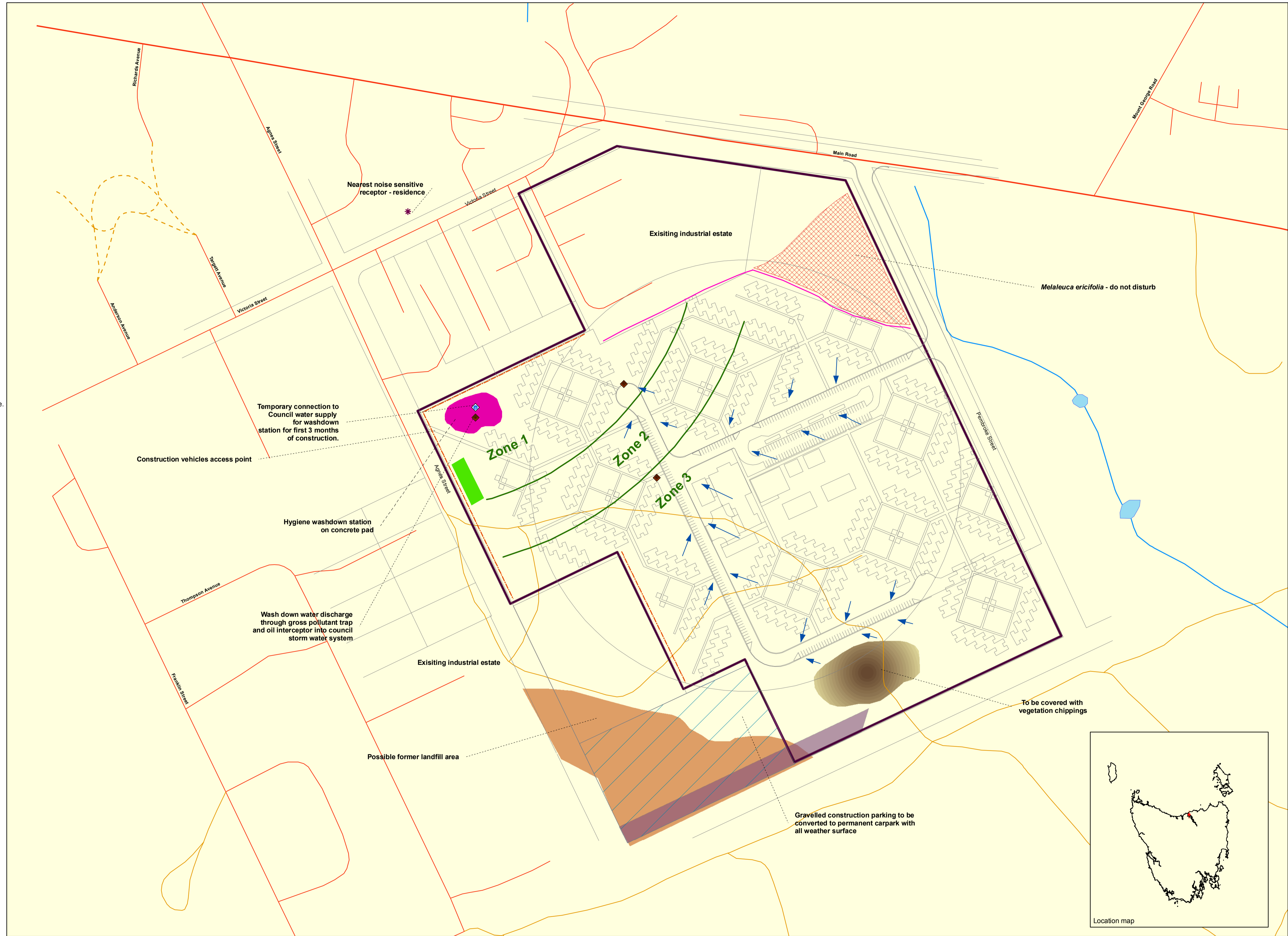
- Vegetation clearing will segregate vegetation into two categories
 a) timber suitable for transport to the chip mills for chipping, and
 b) vegetation not suitable for the chip mills but that instead will be chipped or mulched on-site using a mobile chipper and grinder.
- The mobile chipper and grinder may move about the site as necessary for optimum efficiency.
- To minimise noise impacts, operation of the mobile chipper and grinder must be restricted to between the hours of 6 am and 10 pm.

Sediment controls during construction

- Silt fences or equivalent will be installed wherever the drainage of a work area's enters a drainage line.
- Topsoil stockpiles must be covered with vegetation chippings to minimise erosion and they must be bordered in the downslope side by a silt fence.
- Intermediary silt fences or equivalent must be installed within a work area wherever soil appears to be particularly vulnerable to erosion or wherever the distance to the main drainage line exceeds 50m.
- Gross pollutant traps discharge to be directed to council stormwater system.

Solid and liquid wastes

- The site office will be provided with an ablutions block.
- Effluent from the site office ablutions block will be tankered away for disposal at a municipal sewage treatment facility with the approval of the responsible council.
- Segregated bins for recyclable and non-recyclable waste will be provided at strategic locations across the site.
- Non-recyclable waste must be further segregated into hazardous and non-hazardous waste.
- Recyclable waste will be taken to recycling facilities.
- Non-recyclable waste that is not hazardous will be taken to the pulp mills construction waste landfill cell.
- Non-recyclable waste that is hazardous must be taken to a municipal landfill approved to accept such wastes for disposal.



Legend

- Site office (including ablutions block)
- Silt fencing
- Esk Water connection
- Gross pollutant trap
- Noise
- Direction of overland drainage paths
- Noise zones
- Stormwater cut-off drain
- Workers accommodation facility site layout
- Hydrography
- Site boundary
- Water body
- Construction parking
- National/State Highway
- Access Road
- Unsealed Road
- Walking track
- Weed infestation
- Fill
- Topsoil store
- Hygiene washdown station
- Melaleuca ericifolia- avoid

Sources: Base data from theLIST, (C) State of Tasmania
 Gross pollutant trap (Pitt&Sherry)
 Water controls (Pitt&Sherry)
 Storage and laydown areas (Pitt&Sherry)
 Workers accommodation facility site layout (Pitt&Sherry)
 Construction parking (Pitt&Sherry)
 Vegetation (Gunn's)
 Datum: GDA94 Projection: MGA94 zone 55
 Produced by Pitt&Sherry (LMD) 31/10/2007
 File Ref: J:\HOB\2007\101 - 150\H07118\GIS\H07118_WAFSEP_n001_v003.mxd



Workers accomodation facility SEP - Construction

BBA-SEP-9100-1400-0001-B-00