

Other Controls

Vegetation Clearing

1. This SEP constitutes the approved Forest Practices Plan.
2. Vegetation clearing will segregate vegetation into two categories - (a) timber suitable for possible commercial use (eg firewood), and (b) vegetation that will be chipped or mulched on-site.
3. To minimise noise impacts, vegetation clearing must be restricted to between the hours of 6 am and 7pm.

Fences

1. A plain wire perimeter fence will be constructed to clearly delineate the boundary of Gunns property. No trespass signs will be installed on the fence.
2. A permanent mill site security fence will be constructed with a vehicle access track on the inside. The fence is proposed to be 2 m high ringlock with three strand barbed wire, or similar.

Site drainage during vegetation clearing

1. Early works clearing involving only in situ mulching should not require drain construction (but respond if necessary).
2. Contour drains (grips) will be progressively constructed during clearing operations. Grips will be spaced as per Table 6, page 40 of the Forest Practices Code (2000) to prevent channelling of surface flows. Cross drains will be constructed approximately at right angles to the water flow and have an outlet so that water discharges into the surrounding areas at a minimum distance of 50m from a stream channel or drainage line.
3. Vegetation clearing equipment will cease work on any section where:
 - soils are saturated and turbid water is flowing down a haul track for more than 10m or
 - soils are puddled forming mud or slurry along a haul track to a depth of more than 200mm over a section 20m or longer in length or
 - blading of mud or soil is required to maintain the trafficability of a haul track or
 - turbid water or mud is flowing from a haul track into a watercourse or
 - soils are rutted to a depth of more than 300mm below the original ground level over a 20m section or longer and immediate action will be taken to rectify the situation.
4. Haul tracks will be 'temporarily gripped' prior to any extended work shutdowns of 1 week or more.

Site drainage during bulk earthworks

1. A system of sediment basins <1ML in size will be constructed around the planned footprint of the mill platforms at the commencement of bulk earthworks.
2. These temporary basins will be progressively replaced with the permanent stormwater detention ponds shown on the SEP map
3. All construction stormwater from the disturbed area must be diverted to a sediment detention pond where practicable

Sedimentation controls during bulk earthworks

1. Silt fences or equivalent will be installed to prevent the direct drainage of a work area's catchment entering a watercourse.
2. Topsoil stockpiles must be bordered on the downslope side by a silt fence or equivalent
3. Surface water monitoring during construction will include daily inspections and instrument measurements of water quality at designated monitoring points and pond outfalls when streams or outfalls are flowing

Batter stability

1. Perimeter batters will be hydromulched as soon as practicable after they have been formed.
2. Where inspections show particular vulnerability of perimeter batters to erosion, jute matting may be installed.

Refuelling and spill preparedness

1. Earthmoving and other machinery may be refuelled on site from a mobile fuel tanker provided refueling takes place a minimum of 50m from any stream or drainage line.
2. Machinery and the mobile fuel tanker must carry sufficient fuel spill response equipment to deal with any foreseeable fuel spill. Additional spill response equipment will be stored at the site office.
3. Any fuel tankers and lubricants stored on site must be in a bunded area a minimum of 50m from any stream or drainage line (including the estuary). Bunding will take into consideration natural ground features that may assist in containing any spillage.

Solid and liquid wastes

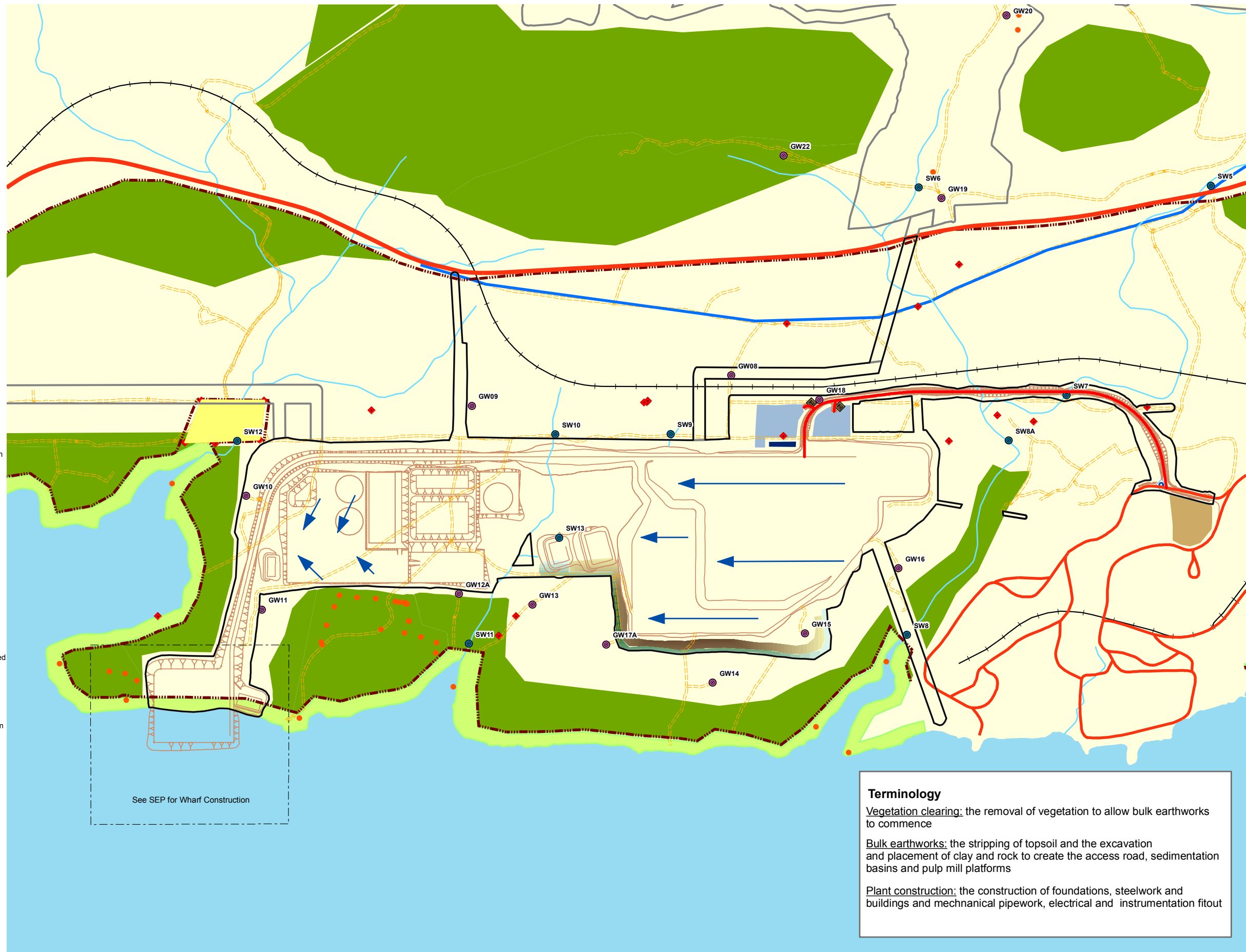
1. The site office will be provided with an ablutions block.
2. Effluent from the site office ablutions block will be tankered away for disposal at a municipal sewage treatment facility with the approval of the responsible council.
3. Segregated bins for recyclable and non-recyclable waste will be provided at strategic locations across the site.
4. Non-recyclable waste will be further segregated into hazardous and non-hazardous waste.
5. Recyclable waste will be taken to recycling facilities.
6. Non-recyclable waste that is inert will be taken to the pulp mill's construction waste landfill cell once that facility is constructed
7. Non-recyclable waste that is hazardous will be taken to a municipal landfill approved to accept such wastes for disposal.

Explosives

1. Only the daily requirements for explosives may be stored on site at any one time.

Sites of Aboriginal and European Heritage

1. A minimum 10m exclusion zone will be established around the Big Stone Fence, the Big Bay Stone Piles and the Big Bay House sites.
2. Management measures are required if blasting is to occur within 50m of historic heritage places.
3. Specific locations of Aboriginal heritage should remain confidential and not be disclosed to other parties
4. Aboriginal sites outside the construction footprint that could potentially be disturbed will be flagged and must be avoided



Terminology

Vegetation clearing: the removal of vegetation to allow bulk earthworks to commence

Bulk earthworks: the stripping of topsoil and the excavation and placement of clay and rock to create the access road, sedimentation basins and pulp mill platforms

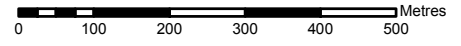
Plant construction: the construction of foundations, steelwork and buildings and mechanical pipework, electrical and instrumentation fitout

Legend

- | | | | | |
|------------------------|--------------------------------|----------------------------|----------------------------|-----------------------|
| SEP Boundary | Ground water monitoring point | Perimeter fence | Construction carpark | State coastal reserve |
| Construction footprint | Surface water monitoring point | Direction of overland flow | Vegetation stockpile | Gunns reserve network |
| Earthworks concept | Aboriginal heritage reserve | Water controls | Construction waste storage | Tamar River |
| Road | TASI site | Watercourse | Site offices | |
| Highway | Historic heritage sites | Gross pollutant trap | Topsoil stockpile | |
| Track | Railway | Ben Lomond Water pipeline | | |

Pulp Mill & Access Road SEP - Construction

GNS-SEP-1670-1400-0003-G-01



Base data from theLIST, (C) State of Tasmania
 Datum: GDA94 Projection: MGA94 zone 55
 Produced by Gunns Ltd (CRD) 120702
 File Ref: MillSite_SEP_Construction_RevG1_120702.mxd